

2025 PAULO DUARTE FIM ENDUROGP WORLD CHAMPIONSHIP

PRIME
STADIUM

FIM

Paulo Duarte
GROUP

enduro
GP

FIM WORLD CHAMPIONSHIP

RACE
FOR
GOOD

FIM RIDE
GREEN

rfme
real federación
motociclista española



ENDUROGP.COM

02
04
MAI
2025

GP of
SPAIN
OLIANA

ROOST

BLACK+DECKER

solac

taurus

ERIC AUGÉ
WP



esportcat

Generalitat de Catalunya

Diputació de Lleida



Mitas

ACERBIS

POLISPORT

Putoline

Paulo Duarte
GROUP

Gmoto

AKRAPOVIC

expotrade
mobile ideas

TRIUMPH



ENVIRONMENTAL SUSTAINABILITY PLAN

Enduro GP Spain
Oliana 02 - 04 May 2025

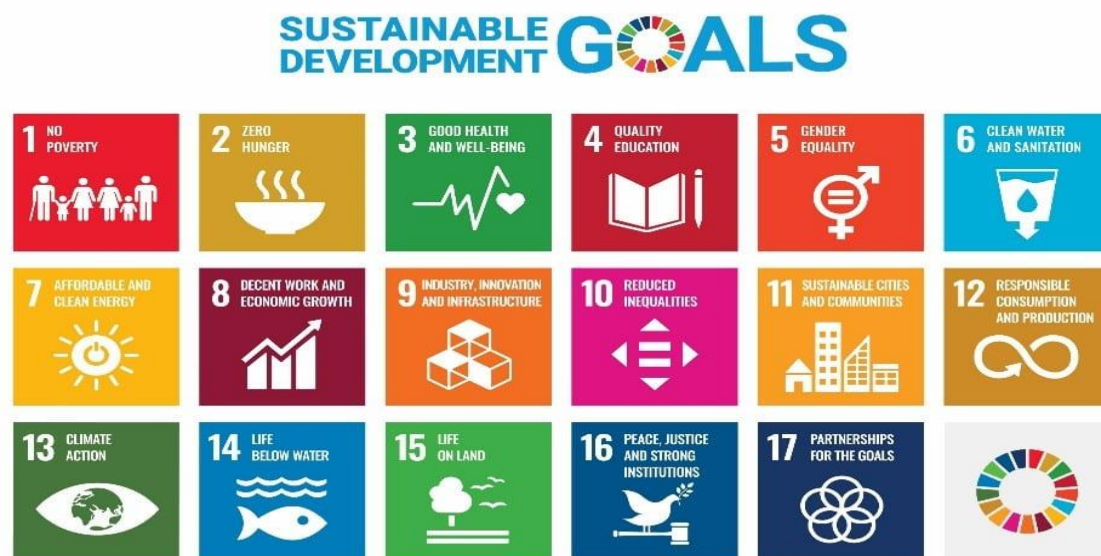
Organizer

Moto Club Segre secció Oliana

Index

| | |
|---|----|
| 1. Framework | 4 |
| 2. Oliana by foot | 4 |
| 3. Organising committee | 6 |
| 4. Biodiversity | 6 |
| 5. Course Selection and Design | 7 |
| 6. Environmental Protection Measures | 9 |
| 7. Biodiversity Protection | 9 |
| 8. Management of Hazardous or Contaminated Waste | 10 |
| 9. Activities | 10 |
| 10. Urban Solid Waste Management | 10 |
| 11. Sanitation and Hygiene | 12 |
| 12. GP Positions | 12 |
| 13. Environmental Guide for competitors and teams | 12 |

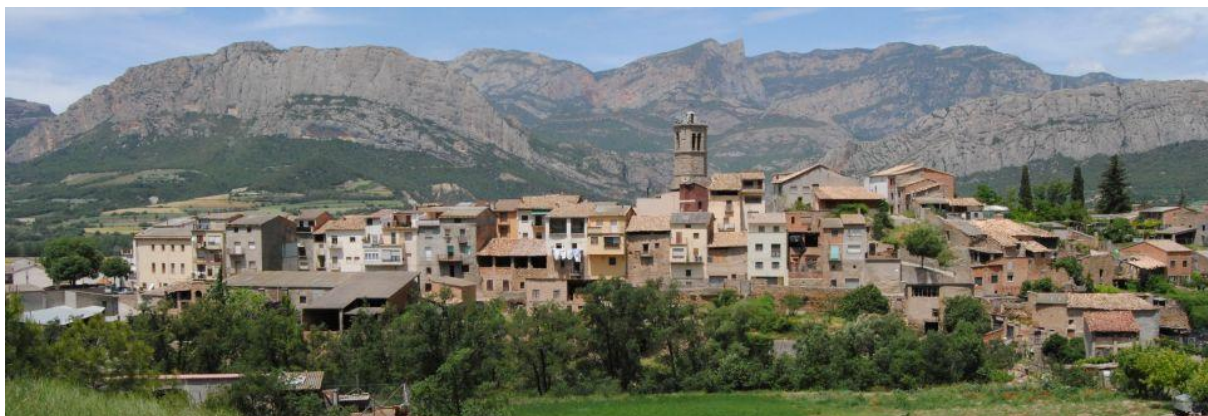
1. Framework






2. Oliana by foot



Spectators will be able to go on foot in the different tests of the world championship. We have created 90% of the tours so that you can go on foot to see them without having to take the car. We will be able to provide signs to make it easier for them to get to the sites and explanations of how to get there. We will also be posting on social networks about information regarding this topic and the organization will be present at all times to ask what they need.



| | |
|---|---|
| Neuralgic center (Paddock, Super Test and Cross Test) |  |
| Enduro Test |  |
| Extreme Test |  |

3. Organising committee

| | |
|----------------|--|
| Organiser | Moto Club Segre secció Oliana |
| Address | Oliana |
| Phone Contact | +34 638036118 |
| E-mail | mcsegreoliana@gmail.com |
| Represented by | Eva Pujol Odén |
| Information | The organizers of this race are made up of people of different ages and backgrounds from a small town. The collaborators who help make this event possible are local people who help out in various areas throughout the weekend. Forty-five percent of the collaborators are women of all ages, and the rest are men of all ages. |

4. Biodiversity

Main native plants and trees

- Holm oak and oak groves: These trees are common in the area and are part of the Mediterranean forest.
- Pine groves: Pine groves are also common in the region, especially black pine and Scots pine.
- Mediterranean scrub shrubs: In the drier, sunnier areas, shrubs such as rosemary, thyme, and lavender are found.

Main mammals

- Wild boar: This is one of the most common mammals in the area, adapted to Mediterranean forests.
- Deer: Deer are also frequently found in our forests.
- Fox: This carnivore is found in the region, adapted to different habitats.
- Bat: Several species of bats inhabit the area.

Main Birds

- Golden Eagle: This majestic bird of prey inhabits our mountains.
- Griffon Vulture: It is possible to spot griffon vultures flying overhead, especially in the mountainous areas.
- Lark: This bird is common in the fields and meadows of the region.
- Blackbird: The blackbird is a very common bird in our forests.

Main aquatic animals

- Trout: The rivers and streams in the area are home to trout populations.
- Dragonflies: These aquatic insects are common in areas near rivers and swamps.
- Butterflies: Several species of butterflies can be found in Oliana's natural environments.

Landscape and natural environment

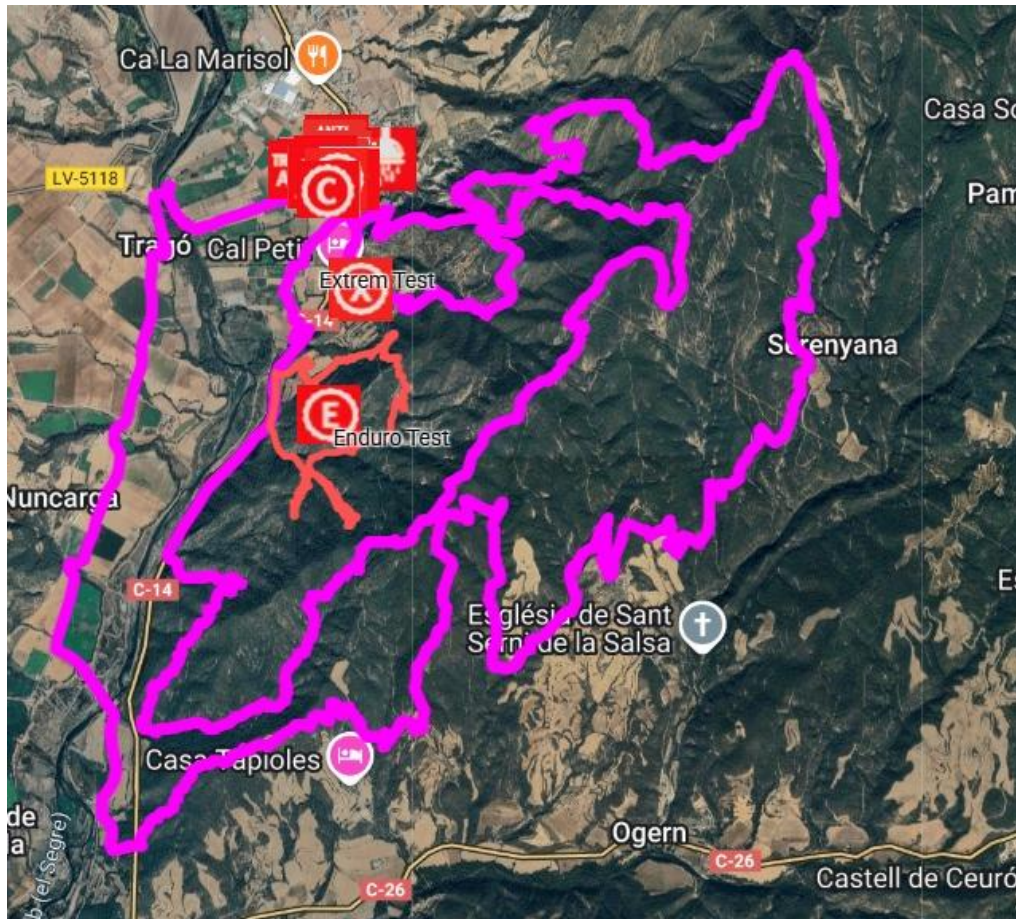
Oliana's landscape is varied, with mountains, rivers, forests, and fields. The area is located in the Catalan Pre-Pyrenees, so it has a mountainous and rugged topography. Mediterranean forests and cultivated fields are characteristic of the region.

Rivers, beaches, and marshes

The Segre River is one of the main rivers that flows through the Oliana area. Therefore, the Oliana Reservoir is located in the Solsonès region, a reservoir that offers water activities and is an important habitat for waterfowl.

5. Course Selection and Design

The race course has been carefully designed to avoid the most sensitive areas of Oliana, such as protected areas, habitats for local flora and fauna, and areas of high ecological value. The routes have been planned to respect existing paths to avoid creating new trails that could harm the natural environment. Furthermore, they have avoided passing near bodies of water or terrain at high risk of erosion.



6. Environmental Protection Measures

Fire Prevention:

We take an active role in fire prevention by cleaning areas, branches and fallen trees. This work not only protects the forest but also ensures the safety of all event participants.

Tracks and special tests:

Carefully selected to avoid sensitive areas with a high concentration of fauna and flora, minimizing environmental impact.

Noise Control Measures:

Implemented to avoid disturbances to local fauna, ensuring a peaceful environment for animals.

Environmental Awareness Actions:

We conduct awareness actions with the public and participants, encouraging respect for nature and the adoption of sustainable practices.

7. Biodiversity Protection

Sustainable Tracks, tests and roads:

Tracks layout designed with the protection of natural parks and sensitive areas in mind, avoiding nesting areas and protected species.

Enhanced Fire Prevention:

Extensive cleaning of vegetation areas to reduce the risk of fire.

Intensive awareness of fire prevention among participants and the public, with distribution of information and practical training actions.

Close collaboration with the firefighters and other competent entities to ensure fire safety, with well-defined contingency plans.

8. Management of Hazardous or Contaminated Waste

In accordance with the FIM Sustainability Code, measures must be taken to prevent spills of fuel, oil, cleaning fluids, degreasers, antifreeze, coolants, brake fluids, etc., from seeping into the ground or evaporating. To this end, the following environmental measures have been implemented to protect soil and water:

Proper Disposal of Hazardous Waste:

Firefighters will remove and dispose of hazardous or contaminated waste, such as engine, transmission, and lubricant oils.

9. Activities

On Wednesday, the WP Eric Augè riders will go to school to give a talk about the world of motorcycling and the possibilities that exist there.

The riders who will go are the following: Jaume Betriu (ESP), Jaumpi Clericus (CL), Adrià Sanchez (ESP), Albin Elowson (SE), Albert Fontova (ESP) i Nacha Correa (CL).

On Friday, before the supertest, our municipal political authorities will hold a talk about the possibilities of the environment and what is available. Afterwards, we will hold a raffle among the pilots for local products from the area.

10. Urban Solid Waste Management

Selective Collection:

- Placement of recycling bins (paper, plastic, glass, unsorted waste) in all event areas (paddock, timed stages, public areas, secretariat, control room, etc.).
- Distribution of recycled plastic bags in various colors (blue, yellow, and green) for teams and the public, encouraging proper waste separation.
- Creation of "ecological islands" in the paddock for the collection of hazardous waste (oils, batteries, tires), with referral to certified entities.

- Delivery of an environmental map with the location of all waste collection points, restrooms, and washing areas.

- Places where the garbage containers are placed:

<https://maps.app.goo.gl/RdvwGFUjxwkubP4R6>

<https://maps.app.goo.gl/JLtCwD9XUkxDkFUC8>

<https://maps.app.goo.gl/Xnw8rnnrHgJA5L4Q7>

<https://maps.app.goo.gl/fbrGKjKduUTosTTi9>

<https://maps.app.goo.gl/JWrCKkdzJvV2hRqe9>

<https://maps.app.goo.gl/Z9Cd9n3xR32PAmNC9>

- Place where the showers are placed:

<https://maps.app.goo.gl/tprgV1YyuWquemzp9>

- Places where polyclines are placed.

10 will be in Paddock A and B. 4 will be in the Extreme Area.

<https://maps.app.goo.gl/YwpmA5RNApnr4Cw8>

<https://maps.app.goo.gl/4i5k4qJ6bfhmDVe88>

<https://maps.app.goo.gl/rAFQHogqdhLzid7MC7>

<https://maps.app.goo.gl/1uSaYtViWhC6W4TQ6>

Cleaning:

- Cleaning actions in all event areas, including timed stages, before, during, and after the event.

- Creation of "eco-brigades" with volunteers to ensure the continuous cleaning of the facility.

- 'Urbasie' will be the company that will take charge of garbage collection during the event.

11. Sanitation and Hygiene

- The event organizers will provide an adequate number of toilets with good hygiene conditions.
- These facilities will be available at the Event Operating Centre, Documentary and Technical
- Verifications, Parc Fermé, Podium, Paddock, and in the Start and Finish Zone of the Special Tests.

12. GP Positions

Paddock A: 42°03'57.1"N 1°18'36.3"E / <https://maps.app.goo.gl/7UyEhTLuL4jDFhdW8>

Paddock B: 42°03'54.3"N 1°18'37.4"E / <https://maps.app.goo.gl/LApvfHjMurhP5axP6>

Super test: 42°03'55.9"N 1°18'43.4"E / <https://maps.app.goo.gl/nRiEM6hYkSNkLFvZ7>

Enduro Test: 42°03'02.7"N 1°18'23.3"E / <https://maps.app.goo.gl/huTBu693HAPhMMxF9>

Cross Test: 42°03'23.4"N 1°18'27.9"E / <https://maps.app.goo.gl/ZuhFpzFygcAJExBX7>

Extreme Test: 42°03'28.8"N 1°18'50.2"E / <https://maps.app.goo.gl/L65RBu6mthwHEMNN7>

Training Area: 42°03'52.1"N 1°18'36.7"E / <https://maps.app.goo.gl/bqRXnBdkjBoHZtd27>

13. Environmental Guide for competitors and teams.

- The use of an ecological mat is mandatory in the paddock.
- The use of an ecological mat is mandatory in the Parc Fermé.
- It is essential to prevent spills of fuel, oil, cleaning fluids, degreasers, coolants, and brake fluids from seeping into the ground or evaporating into the air.

- In the paddock, the organizers will have two Eco Islands where competitors and teams can deposit hazardous or contaminated waste, such as used oil, oil filters, contaminated absorbent cloths or fabrics, used tires, used batteries, as well as any other waste not mentioned here.
- All participants are reminded that the use of cleaning products for washing motorcycles is strictly prohibited. Each competitor is responsible for the solid and liquid waste generated by their team during the event and must always use the recycling bins for responsible sorting of this waste (plastic, metal, cardboard, paper, glass, organic waste, etc.).
- When transporting team members, always prioritize the use of shared vehicles.
- To facilitate the organization of the Oliana EnduroGP, as well as future editions, always follow the instructions of the authorities, organizers, and landowners along the route, so as not to endanger the terrain or the environment.